



**POTBELLY PIG MAINTAINS
(8022)**

Kelley's Potbelly Pig Maintains is a 16% protein, 5/32" pelleted ration designed to give the growth needed and to maintain the animal's overall condition. Mix this product with equal amounts of Kelley's Potbelly Pig Starter/ Grow Pellet for up to 5 days to help the animal adjust to the new feed. Regulate the amount of ration to control the growth rate as desired. This can be done by feeding at a rate of 3% to 5% of the animal's body weight per day.

Feeding Directions: The animal is to be fed one-half the amount, twice a day. Make sure pigs have clean, fresh water available at all times.

WEIGHT	3% BODY WEIGHT	5% BODY WEIGHT
30 lbs	15 oz per day	1 lb 8 oz per day
35 lbs	17 oz per day	1 lb 12 oz per day
40 lbs	19 oz per day	2 lbs per day
45 lbs	22 oz per day	2 lbs 4 oz per day
50 lbs	24 oz per day	2 lbs 8 oz per day
75 lbs	36 oz per day	3 lbs 12 oz per day
100 lbs	48 oz per day	5 lbs per day

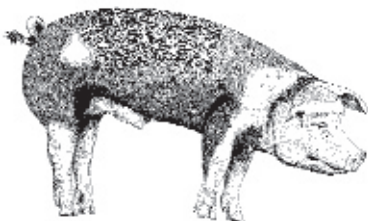
GUARANTEED ANALYSIS

CRUDE PROTEIN	Not Less Than	15.78 %
CRUDE FAT	Not Less Than	2.70 %
CRUDE FIBER	Not More Than	8.60 %
ASH	Not More Than	6.70 %
CALCIUM (Ca)	Not Less Than	.68%
CALCIUM (Ca)	Not More Than	.91%
PHOSPHORUS (P)	Not Less Than	.52%
SALT (NaCl)	Not Less Than	.38%
SALT (NaCl)	Not More Than	.52%
ADDED MINERAL	Not More Than	2.40%

FEATURES

HIGH QUALITY PROTEIN SOURCES
SOYBEAN MEAL

HIGH QUALITY ENERGY SOURCES
GROUND CORN
GROUND SORGHUM
WHEAT BRAN



HIGH QUALITY ROUGHAGE SOURCE
SUNCURED ALFALFA MEAL

ADDED VITAMINS & MINERALS

INGREDIENTS

Ground Sorghum, Ground Corn, Suncured Alfalfa Meal, Dehulled Solvent Extracted Soybean Meal, Wheat Bran, Calcium Carbonate, Mono-Dicalcium Phosphate, Sodium Chloride, Choline Chloride, Zinc Oxide, Manganous Oxide, Ferrous Sulfate, dl-Alpha Tocopherol Acetate, Vitamin A Supplement, Vitamin D3 (d-Act. An. Sterol), Calcium Pantothenate, Niacin Supplement, Riboflavin Supplement, Menadione Sodium Bisulfite Complex, Thiamine Mononitrate, Pyridoxine Hydrochloride, Copper Sulfate, Ethylenediamine Dihydriodide, Vitamin B12 Supplement, Ethoxyquin (a preservative), Folic Acid, Biotin Supplement, Sodium Selenite.

BENEFITS

Needed for growth & repair of body tissue. Soybean meal is high in amino acids

Energy is fuel which enables the body to do work

Provides fiber. Also provides vitamins & minerals

Needed for key metabolic functions & body fluid regulation