



PIG STARTER (8029)

Kelley's Pig Starter is an 18% protein, pelleted ration designed to meet all the nutritional needs at this stage in the piglet's life. Kelley's Pig Starter can be fed creep style from day 1 through day 25 or until 50 lbs. At that time, piglets should be slowly changed over to Kelley's Pig and Sow Pellets.

Management Tips: After the sow farrows, the piglets should be dried, and the navel cord of the piglet should be dipped in iodine. In addition, clip all sharp needle teeth. The piglets need to be kept warm at all times, and this can be accomplished by providing a heat lamp. Iron shots should also be given at the time needle teeth are clipped.

All young boars should be castrated when they are five days to a week old; tests have proven that they suffer less shock and setback at this time.

Feeding Directions: Free feed young animals. Feed 3% to 5% of body weight per day. Make sure piglets have clean, fresh water available at all times.

MARKET SWINE WEIGHT	PRODUCT	APPROX. DAYS	APPROX. FEED CONSUMPTION
Birth to 50 lbs	Kelley's Pig Starter	25	50 lbs
50 to 125 lbs	Kelley's Pig & Sow	50	200 to 250 lbs
125 to 250 lbs	Kelley's Hog Finisher or Big Oink	120	550 lbs

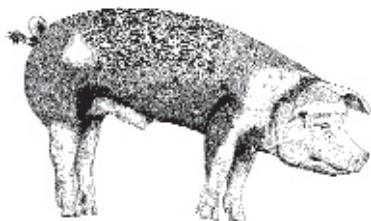
GUARANTEED ANALYSIS

CRUDE PROTEIN	Not Less Than	17.80 %
CRUDE FAT	Not Less Than	3.20 %
CRUDE FIBER	Not More Than	2.80 %
ASH	Not More Than	6.20 %
CALCIUM (Ca)	Not Less Than	.93%
CALCIUM (Ca)	Not More Than	1.25%
PHOSPHORUS (P)	Not Less Than	.61%
SALT (NaCl)	Not Less Than	.34%
SALT (NaCl)	Not More Than	.45%
ADDED MINERAL	Not More Than	2.30%

FEATURES

HIGH QUALITY PROTEIN SOURCES
SOYBEAN MEAL, MEAT & BONE MEAL

HIGH QUALITY ENERGY SOURCES
GROUND CORN, GROUND SORGHUM,
WHEAT BRAN, GROUND BARLEY



**ADDED
VITAMINS &
MINERALS**

INGREDIENTS

Ground Sorghum, Dehulled Solvent Extracted Soybean Meal, Ground Corn, Meat & Bone Meal, Calcium Carbonate, Cane Molasses, Hydrolyzed Animal and Vegetable Fat Blend, Sodium Chloride, Mono-Dicalcium Phosphate, Choline Chloride, Zinc Oxide, Manganous Oxide, Ferrous Sulfate, dl-Alpha Tocopherol Acetate, Methionine Hydroxy Analog, Vitamin A Supplement, Vitamin D3 (d-Act. An. Sterol), Calcium Pantothenate, Riboflavin Supplement, Niacin Supplement, Menadione Sodium Bisulfite Complex, Thiamine Mononitrate, Pyridoxine Hydrochloride, Copper Sulfate, Ethylenediamine Dihydriodide, Vitamin B12 Supplement, Ethoxyquin (a preservative), Folic Acid, Biotin Supplement, Sodium Selenite.

BENEFITS

Needed for growth & repair of body tissue.
Both are high in amino acids

Energy is fuel which enables the body to do work

Needed for key metabolic functions & body fluid regulation