



HOG FINISHER PELLETS (8033)

Kelley's Hog Finisher Pellets are a 12% protein, pelleted complete feed designed to be fed to market hogs and to give you excellent feed conversions to properly finish your animal efficiently.

Feeding Directions: Free feed from 125 lbs of body weight until desired market weight or feed at a rate of 3% to 5% of body weight to control rate of gain.

GUARANTEED ANALYSIS

CRUDE PROTEIN	Not Less Than	11.71 %
CRUDE FAT	Not Less Than	2.90 %
CRUDE FIBER	Not More Than	3.40 %
ASH	Not More Than	5.60 %
CALCIUM (Ca)	Not Less Than	.98%
CALCIUM (Ca)	Not More Than	1.32%
PHOSPHORUS (P)	Not Less Than	.45%
SALT (NaCl)	Not Less Than	.35%
SALT (NaCl)	Not More Than	.48%
ADDED MINERAL	Not More Than	3.20%

INGREDIENTS

Ground Sorghum, Wheat Bran, Ground Corn, Wheat Flour, Dehulled Solvent Extracted Soybean Meal, Calcium Carbonate, Meat & Bone Meal, Sodium Chloride, L-Lysine Hydrochloride, Choline Chloride, Zinc Oxide, Manganous Oxide, Ferrous Sulfate, dl-Alpha Tocopherol Acetate, Vitamin A Supplement, Vitamin D3 (d-Act. An. Sterol), Calcium Pantothenate, Niacin Supplement, Riboflavin Supplement, Menadione Sodium Bisulfite Complex, Thiamine Mononitrate, Pyridoxine Hydrochloride, Copper Sulfate, Ethylenediamine Dihydriodide, Vitamin B12 Supplement, Ethoxyquin (a preservative), Folic Acid, Biotin Supplement, Sodium Selenite.

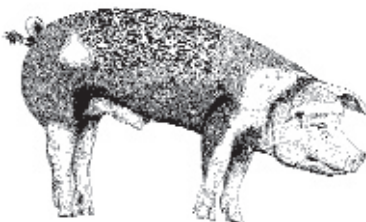
FEATURES

HIGH QUALITY PROTEIN SOURCES

SOYBEAN MEAL
MEAT & BONE MEAL

HIGH QUALITY ENERGY SOURCES

GROUND CORN
GROUND SORGHUM
WHEAT BRAN



ADDED VITAMINS & MINERALS

BENEFITS

Needed for growth & repair of body tissue. Both are high in amino acids

Energy is fuel which enables the body to do work

Needed for key metabolic functions & body fluid regulation