

## FEATURES

## BENEFITS

### High-Quality Protein Sources

Needed for building body tissue, skin, hair, muscle, nervous system

### High-Quality Vitamins & Minerals

Needed for key metabolic functions: enzyme activity, nerves and electrolytic balance, precursors in building and repairing tissue

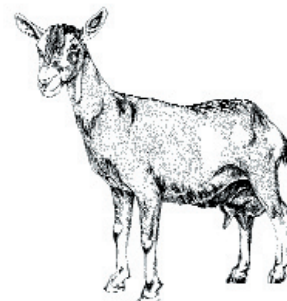
### Digestive Enzymes

Aids in the assimilation of nutrients. Provides microbial growth in rumen



## CALF & GOAT MILK REPLACER

1025



**ACE-HI CALF & GOAT MILK REPLACER** is designed to be used as a supplement to the dam's milk, or in place of the dam's milk when needed. Orphans should be supplemented using the following directions:

### FEEDING DIRECTIONS

| Age                            | Calves over 80 lbs at Birth                                       | Calves under 80 lbs at Birth  | Goats  |
|--------------------------------|---|---|--|
| First 3 days                   | Feed Colostrum  | Feed Colostrum  |  |
| 4-32 days old*                 | 2 cups Milk Replacer with 2 quarts warm water<br>FEED TWICE A DAY | 1-1/2 cups Milk Replacer with 1-1/2 quarts warm water<br>FEED TWICE A DAY | 1 cup Milk Replacer with 1 pint warm water<br>FEED TWICE TO THREE TIMES A DAY FOR 1 WEEK |
| 33-40 days old or until weaned | 2 cups Milk Replacer with 2 quarts warm water<br>FEED ONCE A DAY  | 1-1/2 cups Milk Replacer with 1-1/2 quarts warm water<br>FEED ONCE A DAY  | 1 cup Milk Replacer with 1 pint warm water<br>FEED ONCE A DAY                            |

\*After 7 days: Offer the calf/goat kid fresh water and ACE-HI JUNIOR CALF RATION.

\*After 14 days: Hay of high quality may be introduced at the end of the second week, but is not necessary until after weaning.

For bulk mixing: Mix 3/4 lb to 1 lb of ACE-HI CALF & GOAT MILK REPLACER per gallon of warm water depending on the size of the breed (for calves only).

### GUARANTEED ANALYSIS

|               |               |         |            |               |               |
|---------------|---------------|---------|------------|---------------|---------------|
| CRUDE PROTEIN | Not less than | 21.00 % | PHOSPHORUS | Not less than | 0.60 %        |
| CRUDE FAT     | Not less than | 15.00 % | SODIUM     | Not more than | 1.20 %        |
| CRUDE FIBER   | Not more than | 0.30 %  | VITAMIN A  | Not less than | 30,000 USP/lb |
| CALCIUM (Ca)  | Not less than | 0.70 %  | VITAMIN D3 | Not less than | 6,000 IU/lb   |
| CALCIUM (Ca)  | Not more than | 1.25 %  | VITAMIN E  | Not less than | 25 IU/lb      |

### INGREDIENTS

Dried Skim Milk, Dried Whole Whey, Animal Fat (preserved with BHA), Whey Protein Concentrate, Soy Protein Concentrate, Sodium Caseinate, Lecithin, dl-Methionine, L-Lysine, Sodium Sillico Aluminate, Tricalcium Phosphate, Artificial Flavoring, Lactobacillus Acidophilus, Aspergillus Oryzae, Bacillus Subillus, Sacraomyces Cerevisiae, Cellulases, Alpha Amylase, Proteases, Lipase, Choline Chloride, Vitamin A Supplement, Vitamin D3 Supplement (d-Act. An. Sterol), Vitamin E Supplement, Menadione Sodium Bisulfite Complex (Vitamin K), Ascorbic Acid, Vitamin B12 Supplement, Riboflavin Supplement, Calcium Pantothenate, d-Biotin, Niacin Supplement, Thiamine Mononitrate, Folic Acid, Pyridoxine Hydrochloride, Iron Sulfate, Magnesium Oxide, Zinc Sulfate, Calcium Iodate, Manganese Sulfate, Sodium Selenite, Ethylene Diamine Dihydriodine, Cobalt Sulfate, Copper Sulfate.